

# **Squid** mit **ActiveDirectory**

Anbindung auf einem Nettop



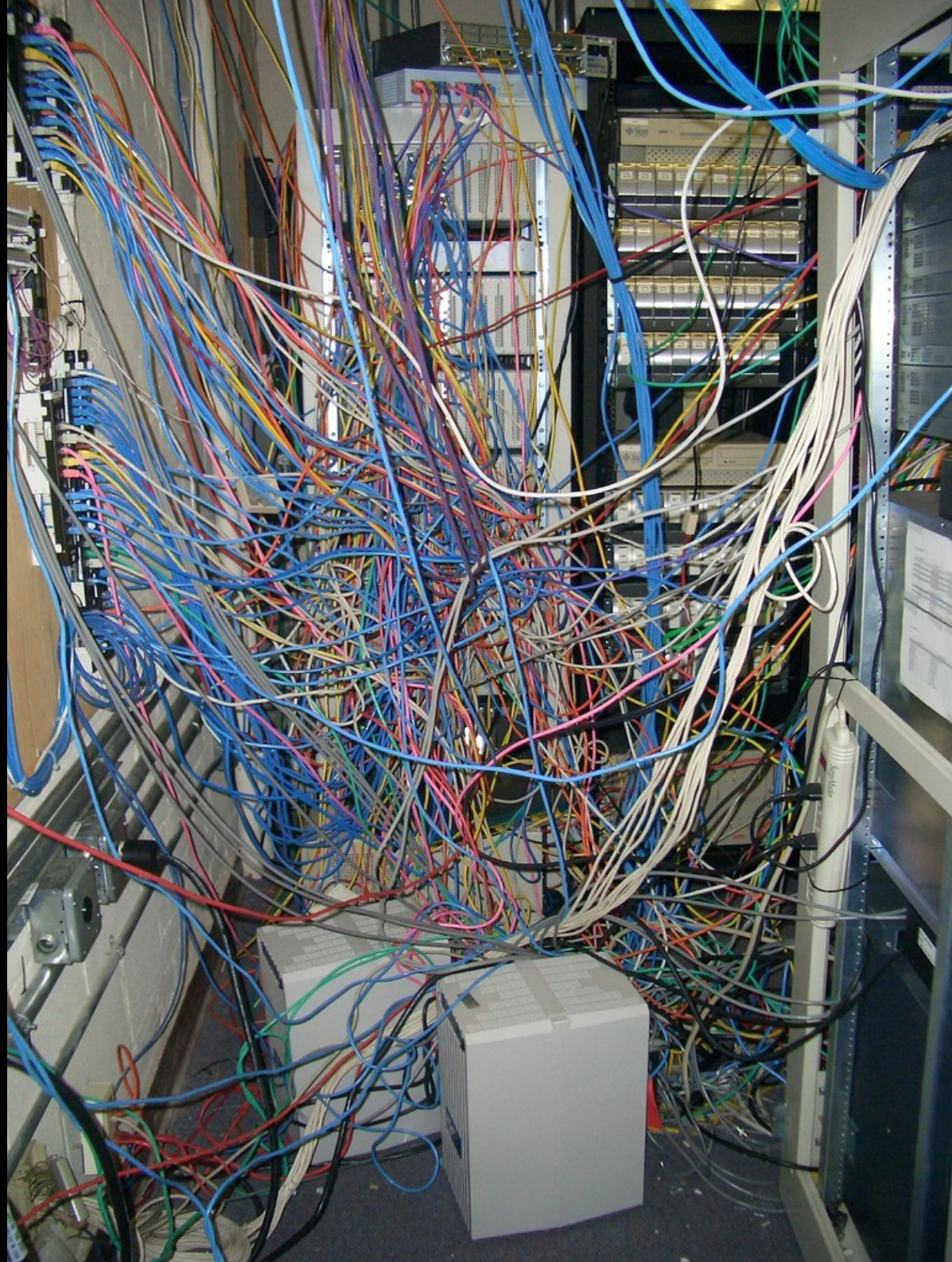




San Francisco







Du ich bräuchte mal...

... 'nen Webfilter

Aber...

< Stromverbrauch

Filtern von  
Domains

AD Anbindung +  
Gruppen

< Kosten







Tanze **Samba** mit mir

Samba Samba die ganze Nacht



apt-get install

squid

krb5-user

samba

smbclient

winbind

squid -v

--enable-epoll

--enable-snmp

--enable-async-io

--with-maxfd=65536

...

## krb5.conf

```
[libdefaults]
```

```
...
```

```
default_realm = FQN.DOMAIN
```

```
[realms]
```

```
FQN.DOMAIN = {
```

```
kdc = domaincontroller:88 #kerberos
```

```
kdc = domaincontroller:464 #kpasswd
```

```
admin_server = domaincontroller:464
```

```
default_domain = FQN.DOMAIN
```

```
}
```

```
[domain_realm]
```

```
.fqn.domain = FQN.DOMAIN
```

```
fqn.domain = FQN.DOMAIN
```



Kerberos ist pingelig

ntpdate domaincontroller

## samba.conf

```
[global]
workgroup           = meinedomäne
security           = ADS
realm              = fqdn.meinedomäne
encrypt passwords  = true
dns proxy          = yes
password server    = *
winbind use default domain = yes
...
```

Server ab in die Domäne

```
net join -U domain-admin
```



# squid.conf

## # Authentifikation Squid mit AD

```
auth_param ntlm program  
/usr/bin/ntlm_auth  
--helper-protocol=squid-2.5-ntlmssp
```

```
auth_param basic program  
/usr/bin/ntlm_auth  
--helper-protocol=squid-2.5-basic
```

...

```
acl AuthUser proxy_auth REQUIRED  
http_access deny !AuthUsers
```

...

# squid.conf

## # AD-Gruppen

```
external_acl_type nt_group ttl=5 children=5  
%LOGIN /usr/lib/squid/wbinfo_group.pl
```

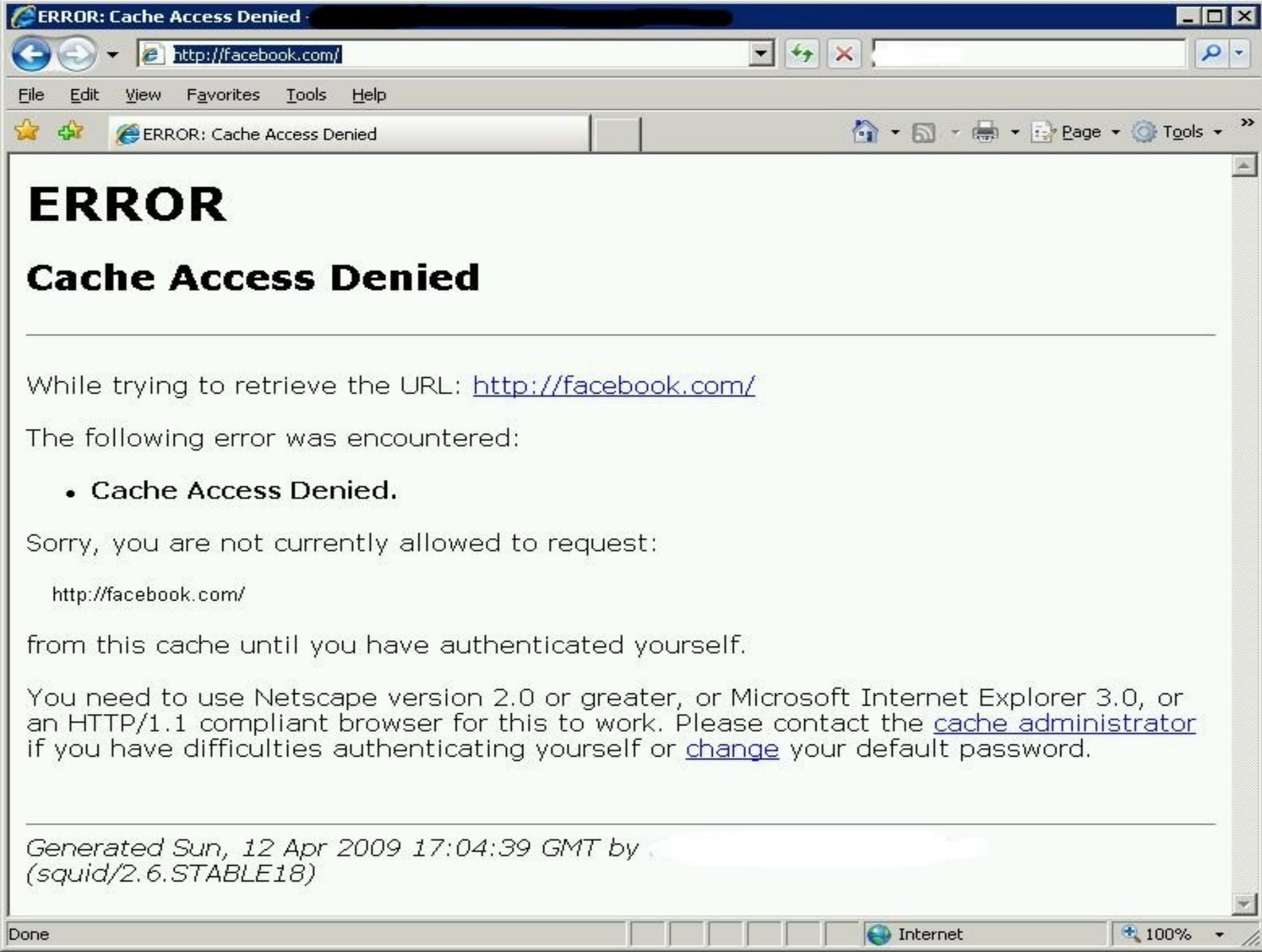
## squid.conf

```
acl MARKETING external nt_group ad-group-  
marketing
```

```
acl BANNED_SITES url_regex  
"/etc/squid/sperr.liste"
```

```
http_access deny BANNED_SITES  
MARKETING
```





# ERROR

## Cache Access Denied

---

While trying to retrieve the URL: <http://facebook.com/>

The following error was encountered:

- **Cache Access Denied.**

Sorry, you are not currently allowed to request:

<http://facebook.com/>

from this cache until you have authenticated yourself.

You need to use Netscape version 2.0 or greater, or Microsoft Internet Explorer 3.0, or an HTTP/1.1 compliant browser for this to work. Please contact the [cache administrator](#) if you have difficulties authenticating yourself or [change](#) your default password.

---

*Generated Sun, 12 Apr 2009 17:04:39 GMT by  
(squid/2.6.STABLE18)*

Wie erzwingen ich die  
Proxy-Benutzung?

Fazit?



# Squid

**Macht dich voll Webfilter**



